



OFFICE FURNITURE
& STORAGE SYSTEMS



P: 03 9357 8343
F: 03 9357 0787

E : sales@stronghold.com.au
www.stronghold.com.au

Stronghold proudly manufactures high quality office and storage products in Melbourne.

We have a specialised design team on site to assist with your custom projects and can offer a wide range of colours to suit your decor.



VERTICAL FILING CABINETS



Stronghold filing cabinets are strong all steel construction and feature full extension ball bearing runners, anti tilt and full height drawer sides. Heavy duty 35kg drawer load capacity (UDL)

4 Drawer	1320H x 470W x 620D
3 Drawer	1020H x 470W x 620D
2 Drawer	720H x 470W x 620D

Standard Colours: Silver Grey, Graphite Ripple, Wild Oats, White Satin & Black Satin

Extended Colours: Refer to Stronghold colour range

Other Colours: By request

LATERAL FILING CABINETS



Heavy duty 45kg drawer load capacity (UDL)

4 Drawer	1320H x 900W x 480D
3 Drawer	1020H x 900W x 480D
2 Drawer	690H x 900W x 480D

Standard Colours: White Satin

Extended Colours: Refer to Stronghold colour range

Other Colours: By request

MOBILE PEDESTALS



Heavy duty 35kg drawer load capacity (UDL)

2 + 1 File, Flat Front	600H x 390W x 520D includes pencil tray
2 File	650H x 470W x 490D

Standard Colours: White Satin & Silver Pearl

Extended Colours: Refer to Stronghold colour range

Other Colours: By request

MOBILE CADDY

Heavy duty 35kg load capacity (UDL). Fitted with pencil, utility and file drawers, along with tambour shelving and lockable translucent doors. Includes pencil tray.

RHS & LHS available	1050W x 460D x 570H
---------------------	---------------------

Standard Colours: White Satin/Translucent doors
Extended Colours: Refer to Stronghold colour range
Other Colours: By request



RHS shown

TAMBOUR CABINETS



Strong all steel construction. Stronghold Tambour Cabinets come with full length magnetic catch, PP door slats and adjustable feet.

900w	Shelves included
680H x 900W x 500D	1
1020H x 900W x 500D	2
1340H x 900W x 500D	2
1980H x 900W x 500D	4
1200w	
680H x 1200W x 500D	1
1020H x 1200W x 500D	2
1340H x 1200W x 500D	2
1980H x 1200W x 500D	4

Standard Colours: White Satin/White Doors, Silver Pearl/Silver Doors
Extended Colours: Refer to Stronghold colour range
Other Colours: By request

TAMBOUR ACCESSORIES

Roll Out Frame

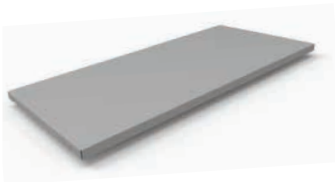


Standard Colours: Dark Grey only

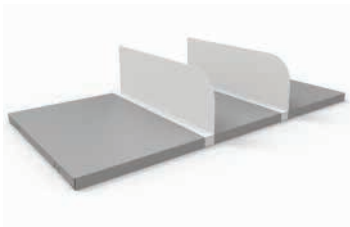
Roll Out Shelf



Shelf

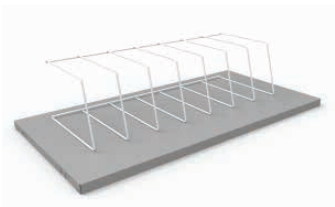


Shelf Divider

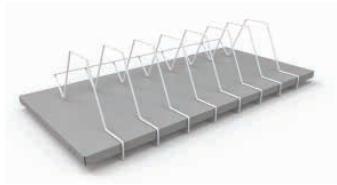


Standard Colours: White Satin & Silver Pearl
Extended Colours: Refer to Stronghold colour range
Other Colours: By request

Wire Rack



Wire Rack - Wrap Around



Standard Colours: White only

Planter Box



Standard Colours: White Satin
Other Colours: By request

4

Cabinets & Shelving

CABINETS & SHELVING

Stronghold Stationery and Industrial Cabinets are of sturdy welded construction with welded shelf support strips for extra strength. Reinforced doors are fitted with a secure 3 point locking system with a flush fitting key lock and handle. Standard cabinets come with shelf load capacity of 120kg and adjustable feet.

STATIONERY CABINET



STATIONERY CABINET	DIMENSIONS	SHELVES INC
Standard Cabinet – 1840 High	1840H x 900W x 455D	3
Cabinet – 915H	915H x 900W x 455D	2
Cabinet – 1370H	1370H x 900W x 455D	2
Cabinet – 2100H	2100H x 900W x 455D	4
Narrow Cabinet - Single Door	1840H x 600W x 455D	3
Slimline Cabinet – 1840H	1840H x 900W x 350D	3
Extra Deep Cabinet – 915H	915H x 900W x 600D	2
Extra Deep Cabinet – 1370H	1370H x 900W x 600D	2
Extra Deep Cabinet – 1840H	1840H x 900W x 600D	3
Extra Deep Cabinet – 2100H	2100H x 900W x 600D	4
Extra Width Cabinet – 1840H	1840H x 1150W x 455D	3
COMBINATION		
Combination Cabinet - 1840H	1840H x 900W x 455D	3
Combination Cabinet – 2100H	2100H x 900W x 455D	4
Extra Deep Combo Cabinet – 1840H	1840H x 900W x 600D	3
Extra Deep Combo Cabinet – 2100H	2100H x 900W x 600D	4
Industrial Combo Cabinet – 2100H	2100H x 1150W x 600D	4
SLOPE TOP		
Slope Top Cabinet	1840H/2100H x 900W x 455D	4
INDUSTRIAL		
Industrial Cabinet	2100H x 1150W x 600D	4

Standard Colours: Refer to Stronghold colour range
Other Colours: By request

COMBINATION CUPBOARD



400W hanging space
500W shelves

Standard Colours: Refer to Stronghold colour range
Other Colours: By request

INDUSTRIAL CABINET



Made from extra H/D materials with full length piano hinge on doors. H/D chrome swing handle/hasp lock with provision for padlock. 200kg shelf load capacity.

Standard Colours: Refer to Stronghold colour range
Other Colours: By request

SLOPE TOP CABINET



Front height 1840, rear height 2100

Standard Colours: Refer to Stronghold colour range
Other Colours: By request

BUDGET CABINETS

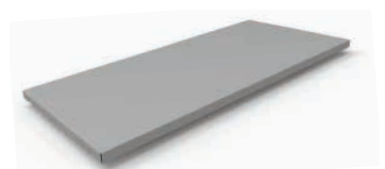


Our Budget Cabinets are available flat packed and assembled. Strong all steel construction with 80kg shelf load capacity (UDL).

1016H x 915W x 455D*	2 Shelves
1830H x 915W x 455D**	3 Shelves

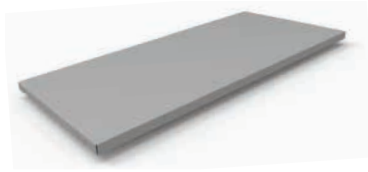
*Standard Colours: Silver Grey only

**Standard Colours: Silver Grey & Graphite Ripple



Extra shelves are available for all products on this page

OPEN BAY SHELVING



Extra shelves available for this product

Sturdy welded construction with shelf load capacity of 120kg and adjustable feet.

OPEN BAY SHELVING	DIMENSIONS	SHELVES INC
Standard Open Bay – 1370H	1370H x 900W x 455D	2
Slimline Open Bay - 350D	1840H x 900W x 350D	3
Open Bay - 1840H	1840H x 900W x 455D	3
Extra Deep Open Bay - 1840H	1840H x 900W x 600D	3
Standard Open Bay - 2100H	2100H x 900W x 455D	4

Standard Colours: Refer to Stronghold colour range
Other Colours: By request

GENERAL / ARCHIVE RACKING

General archive racking is of strong bolted construction, with shelf load capacity of 350kg (UDL).

2000H x 1800W x 450D	6 shelves
----------------------	-----------

Standard Colours: Silver Grey only

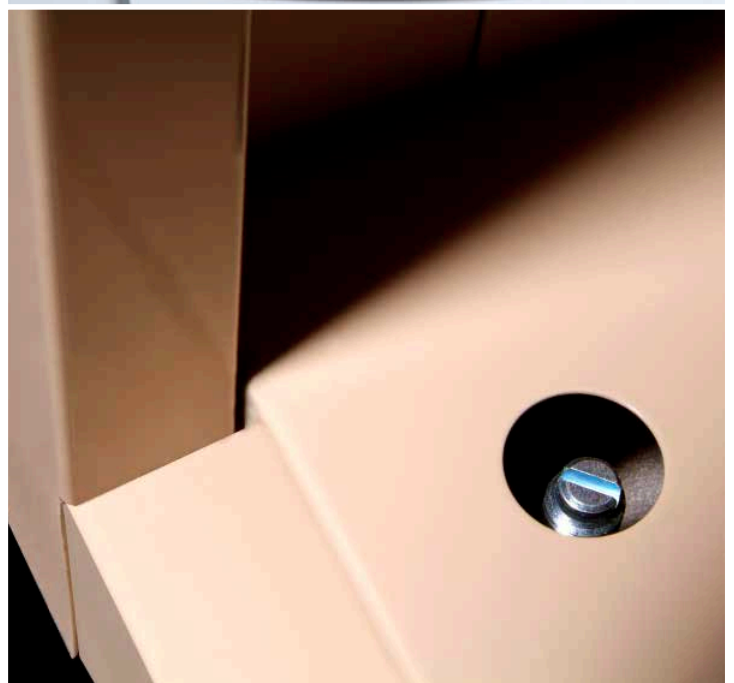


ARCHIVE RIVET LOCK SHELVING

Rivet lock shelving doesn't require any tools for assembly, with shelf load capacity of 80kg (UDL).

2000H x 1080W x 450D	5 shelves
----------------------	-----------

Standard Colours: Silver Grey only



6

Lockers

FLAT TOP, SLOPING TOP & STEP LOCKERS



Strong welded construction with a full range of locking options available: Electronic, padlocking, key locking with master key systems.

LOCKERS	DIMENSIONS
Flat Top Lockers 305W	1840H x 305W x 455D
Flat Top Lockers 380W	1840H x 380W x 455D
Sloping Top Locker 305W	1840H/2145H x 305W x 455D
Sloping Top Locker 380W	1840H/2145H x 380W x 455D
Step Lockers	1840H x 380W x 455D

Standard Colours: Refer to Stronghold colour range

Other Colours: By request

LOCKER ACCESSORIES



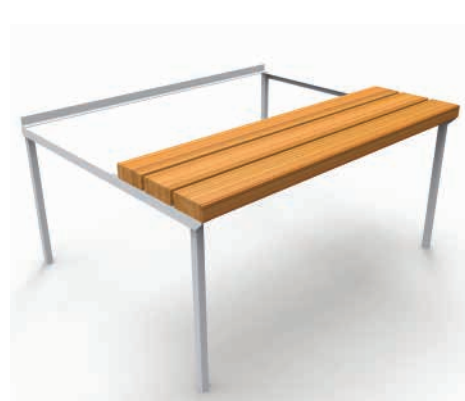
SEATS:

Available in aluminium and timber slats, made to order to suit locker room layout.



STANDS:

Various heights and made to suit various banks of lockers



SEATS & STANDS:

Aluminium or timber slats, various lengths to suit banks of lockers

SMALL PART BIN STORAGE - LOUVRE PANELS



Individual louvre panels come with fixing holes for attaching to walls

SIZES
1830H x 455W
1200H x 455W
915H x 455W
457H x 455W

Standard Colours: Silver Grey only

FREE STANDING LOUVRE PANELS



Free standing louvre panels available: with or without H/D castors

SIZES
1830H x 455W
1370H x 455W

Standard Colours: Silver Grey only

PLASTIC PARTS BINS



SMALL	85H x 100W x 172D
MEDIUM	124H x 130W x 220D
LARGE	165H x 200W x 275D

Standard Colours: Yellow
Other Colours: By request

BIN CABINETS



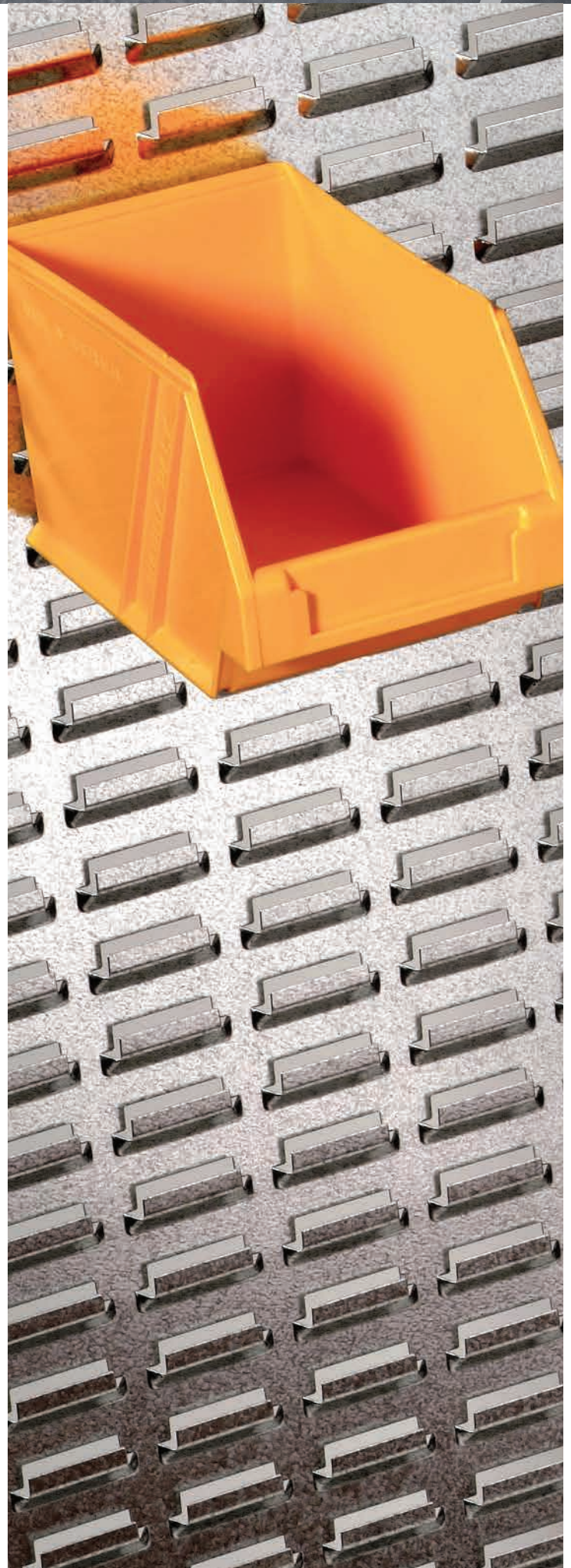
Bin Cabinets are strong welded construction with 3 point locking and reinforced doors.

1840H x 900W x 350D

Available with or without doors

Note: Part bins available as optional extra

Parts bins as per photo –
16 x Small, 36 x Medium, 8 x Large
Standard Colours: Refer to Stronghold colour range
Other Colours: By request



Stronghold Colour Range



Lawn Green



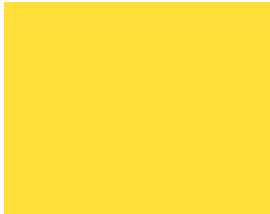
Blaze Blue



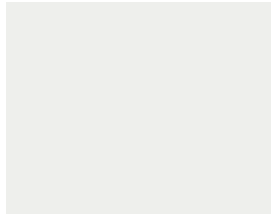
Signal Red



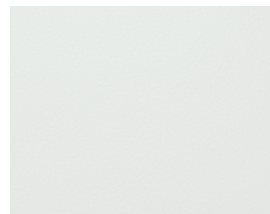
X15 Orange



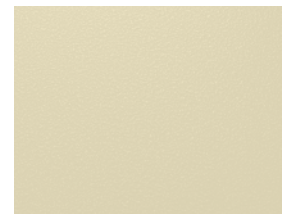
Lemon Yellow



White Satin



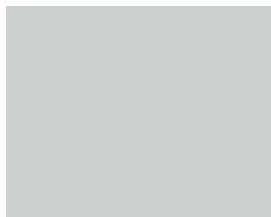
White Ripple



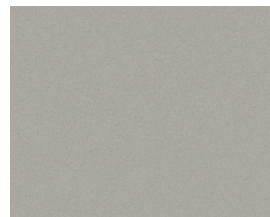
Beige Ripple



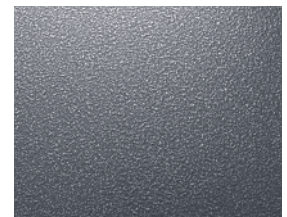
Wild Oats



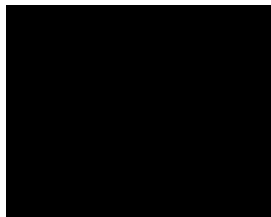
Silver Grey



Silver Pearl



Graphite Ripple



Black Satin



Black Ripple



All information and specifications contained in this leaflet were correct at the time of printing.

Stronghold reserves the right to modify specifications and details without notice.

Culpan Industries Pty Ltd ABN 68 291 843 212
© 2015 Culpan Industries

Note: Colours are as accurate as the printing process will allow.